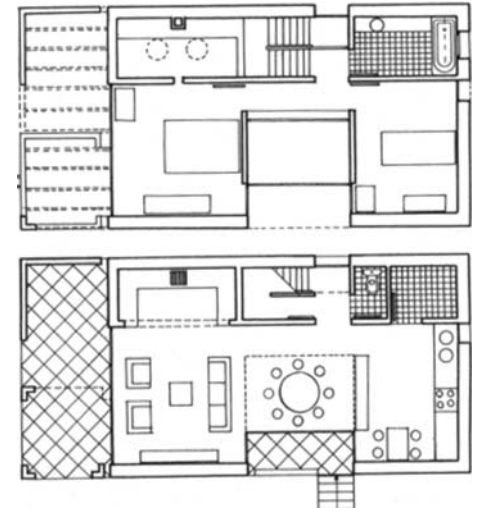


Private House (Saint-Péray, France)



Brief: private house -
Area: 100 sq.m.² -
Cost: 36000 € (valued in 1980) -
Schedule: Detailed Studies 1980,
construction 1980-82 -
Client: private
With: Gilles Perraudin.



This private house is located in the isolated valley of Ardèche, far from neighbouring homes.

The simplicity of the volume (double cube), its compact nature, and the raw materials used contribute to creating a direct relationship between the house and the rugged natural environment.

The limited budget led to certain technical decisions which nonetheless avoided the compromise of a pseudo vernacular approach. A thick wall, housing the house's "technical" spaces, constitutes a protective element against the western environment. It comprises the chimney, living space, light well and a place for conversation in the winter.